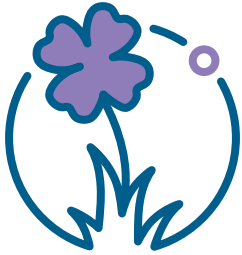


bonsilage ALFA

Safely silaging of lucerne and clover



bonsilage ALFA ensures the ensiling of lucerne and clover grass with 30 - 45% DM. Homofermentative strains (*L. paracasei* and *L. plantarum*) reduce the pH value quickly and permanently, while *Lc. lactis* reliably inhibits clostridia. The heterofermentative *L. buchneri* protects the silage from reheating. This stabilises the fermentation process, prevents incorrect fermentation and ensures the feed quality in the long term.

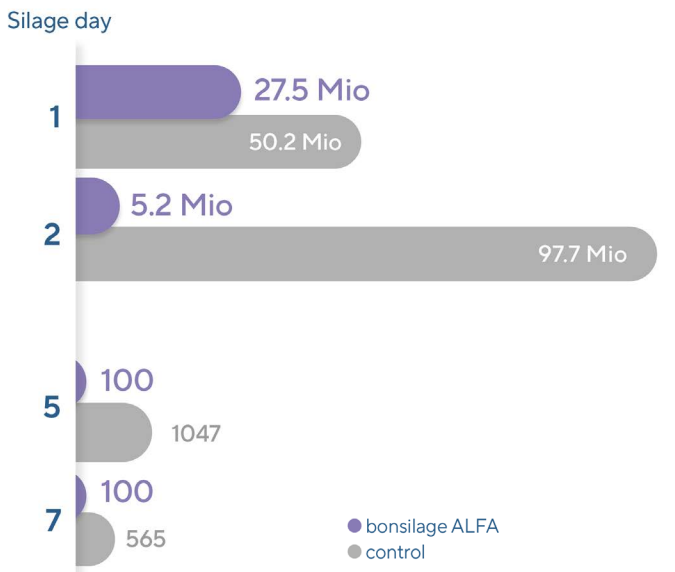


Also available for organic farms.

DM content:	30-45%
Brix values:	< 4
Rapid pH reduction:	
Effect against Clostridia:	
N efficiency:	
Area of application:	Lucerne and grass-clover
Dosage:	2 g/t= 250,000 CFU/g silage *

*Container size: 100 g for 50 t FM | 400 g for 200 t FM

Number of enterobacteria (KBE/g FM) in alfalfa silage, DM Ø 39.1%



Publisher: according to Gressley, 2022

NH3-N values in alfalfa silage (Ø 39.1% DM)

